

1

2

3

4

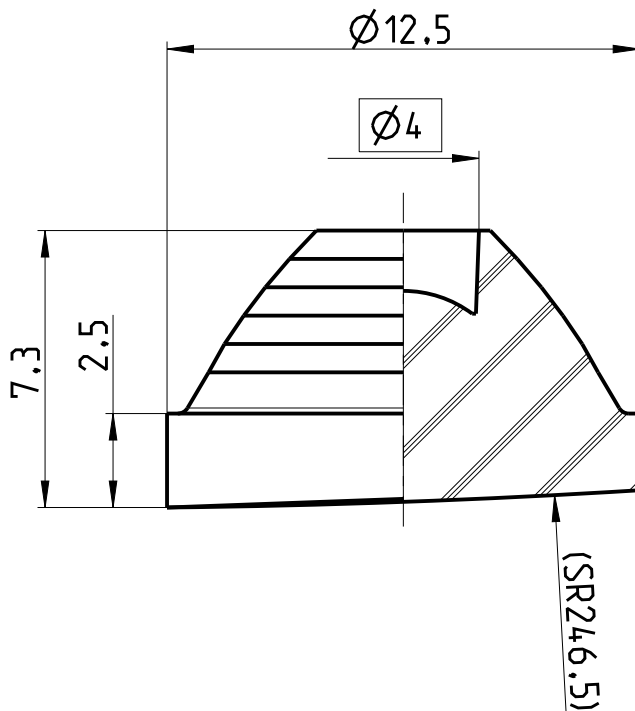
A

B




C



D

E



1:1

-  Quality checked  
 Constructional dimension  
 Dimension for information only

		Scale	Material		Tolerances unless otherwise specified are $\pm 1\%$ , but minimum $\pm 0.5$ mm
		5:1 (1:1)	SUPRAX <sup>®</sup> 8488		
			Date	Name	F NE M TIR Lens LED-T Madrid Ø4/24 ° based on 71440 [142 0308]
		Formed	12-FEB-16	Becker	
		Checked	15-FEB-16		Final part number (SAP) 1501584
		Auer Lighting GmbH Hildesheimerstrasse 35 D-37581 Bad Gandersheim Tel: +049 (0)5382 / 701-0 www.auer-lighting.com		Drawing number	Version   Project
				71440e_000_005_303	05   71440e
		auer lighting			

This drawing is our property. Multigraphing and sending copies to third parties is punishable, bound to claim for damages and prosecution. (Copyright law, law against unfair competition, BGB). All rights reserved for patent application (§7 PG) or registered design (§5 GMG).