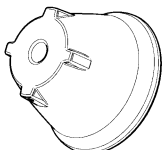
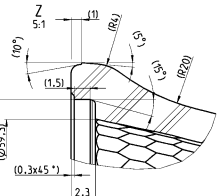
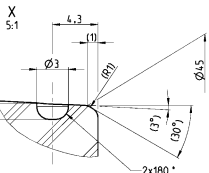
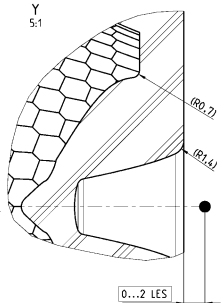
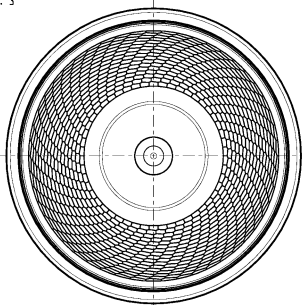
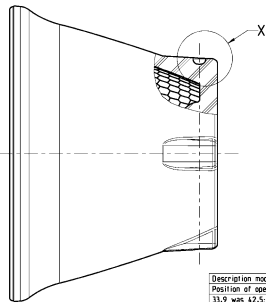
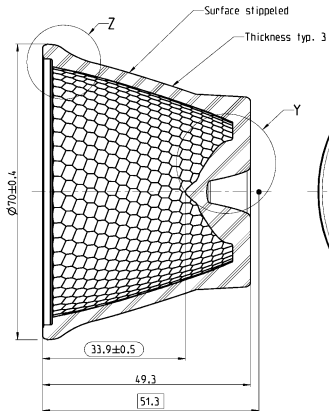


1:1



1:1



- Quality checked
- Constructional dimension
- Dimension for information only

Description modified	Date	Author
Position of operation point modified	14. Nov-16	G. Ginter
33.9 was 42.5; 47.9 was 53.55;	27. Jun-16	G. Ginter
49.3 was 25.3; R0.7 was R0.5;		
R1.4 was R1.4 was 1.75;		
Ø59.3 was Ø60.2; Ø63 was Ø63.9;	12. May-16	G. Ginter
optical data modified		
Ø63.2 was Ø59.3	28. Aug-15	G. Ginter
Ø63.9 was Ø63		
Änderung	Datum	Name

Scale	Material	Weight
2:1 (5:1) (1:1)	SUPRAX Ø Ø488	75g
Date	Name	
Forecast	24. Aug-15	G. Ginter
Checked	14. Nov-16	

Tolerances unless otherwise specified are ±1%, but minimum ±0.5 mm

Reflector Lens Jupiter 70  
30°-wide

Final part number (EAP)	150 1196
Ordering number	71374_000_004_323
Order number	04
Project number	71374
Author	Standard
Approval	



Auer Lighting GmbH  
Industriegebiet 16  
D-37475 Bad Gandersheim  
Tel. +49 (0)5323 7201-0  
www.auer-lighting.com

This drawing is not a contract. All drawings and technical data are subject to change without notice and are subject to change without notice. All rights reserved for patent applications in all countries.