

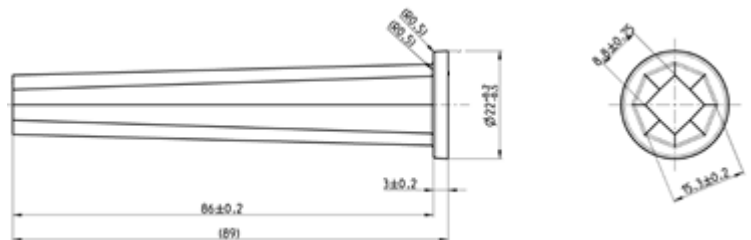
LIGHT GUIDE ROME - 8 mm CLASS -



Material number: 1502092

Glass: SUPRAX® 8488
Borosilicate Glass

Length: 89 mm
Input aperture: 8,8 x 8,8 mm
Output aperture: Ø 16,6 mm



Packing unit: 1 pc

Properties:

Polished input/output aperture
Flange for easy mounting
Transmittance: up to 87%
Permanent operating temperature: 400°C
Efficiency option: AR coatings

Optics:

LED: OSRAM Splitstar S32

Customs tariff number: 70140000