

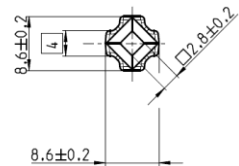
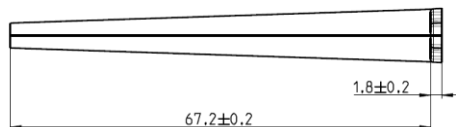
## LIGHT GUIDE ROME 2,8 – 69 MM



**Material number:** 1501232

**Glass:** SUPRAX® 8488  
Borosilicate Glass

**Length:** 69 mm  
**Input aperture:** 2,8 x 2,8 mm  
**Output aperture:** 5,9 x 5,9 mm



**Packing unit:** 1 pc

**Properties:**

Polished input/output aperture  
Flange for easy mounting  
Transmittance: up to 94%  
Permanent operating temperature: 400°C  
Efficiency option: AR coatings

**Optics:**

**LEDs:** e. g. OSRAM OSTAR S2WN,  
S2W, LED Engin LZ4

**Customs tariff number:** 70140000