

## Total internal reflection Efficiency up – Energy down

Ergonomic and efficient lighting installations with up- and downlight as needed made with TIR reflectors from Auer Lighting. We are using the most recent CNC tooling machinery and in combination with state-of-the-art pressing techniques high precision TIR reflectors can be offered. The designs allow using a variety of lamps to cover a wide range of applications for industrial and shop lighting.

Retrofit or new installations: savings are guaranteed.



**Auer Lighting GmbH**  
Hildesheimer Straße 35  
37581 Bad Gandersheim  
Germany  
T +49 (0) 5382 701-0  
F +49 (0) 5382 701-297  
info@auer-lighting.com  
www.auer-lighting.com

## LIGHT ON DEMAND – HIGH BAY REFLECTORS

Glass combined with TIR



# There is no better performance

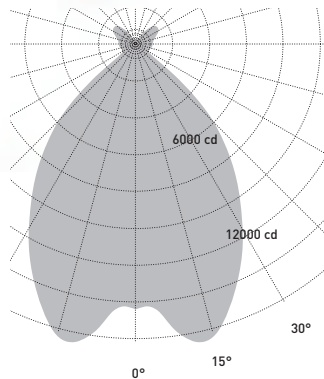
## Efficiency highlights

Designed for Metal Halide Lamps  
up to 400 W



### Properties

- Dimension: 370 × 220 mm
- Weight: 4.5 kg
- "Standard" design:
  - 10% Uplight
  - 90% Downlight
- Overall efficiency: >95%
- Designed for high ceilings

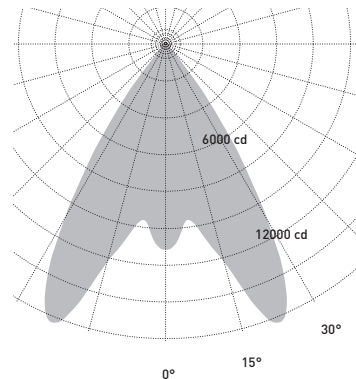


Design & Function for 35 W  
up to 210 W

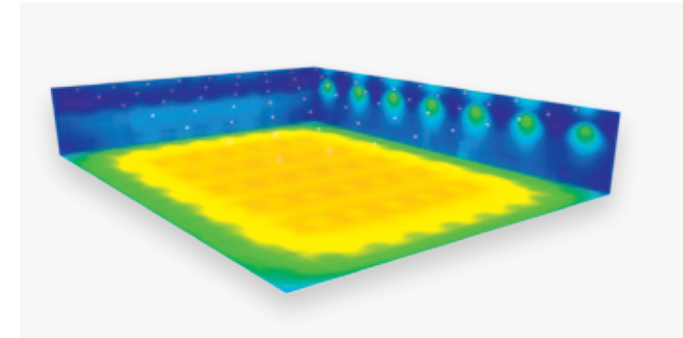


### Properties

- Dimension: 210 × 155 mm
- Weight: 1.3 kg
- "Special" design:
  - 30% uplight
  - 70% downlight
- Overall efficiency: >95%
- Designed for mounting heights >2m



More power. Fewer watts.



You can realize a smooth illumination and annual savings of: 81 t CO<sub>2</sub> · 135 MWh energy · Euro 20,236

(The above example refers to a room of 60 m × 80 m, using 63 Auer Lighting high bay reflectors resulting in an average illuminance of 300 lx compared to a competitor's glass high bay.)

### Tested lamps

#### High Power

- 400 W Venture HIPE
- 210 W Philips Master Colour CDM-T MW
- 150 W Osram Powerball HCI-T
- 140 W Philips Master CosmoWhite CPO-TW
- 70 W Venture Ceramic Master Plus
- 35 W Venture Ceramic Master Plus

#### Low Power

Reference light engines are available.