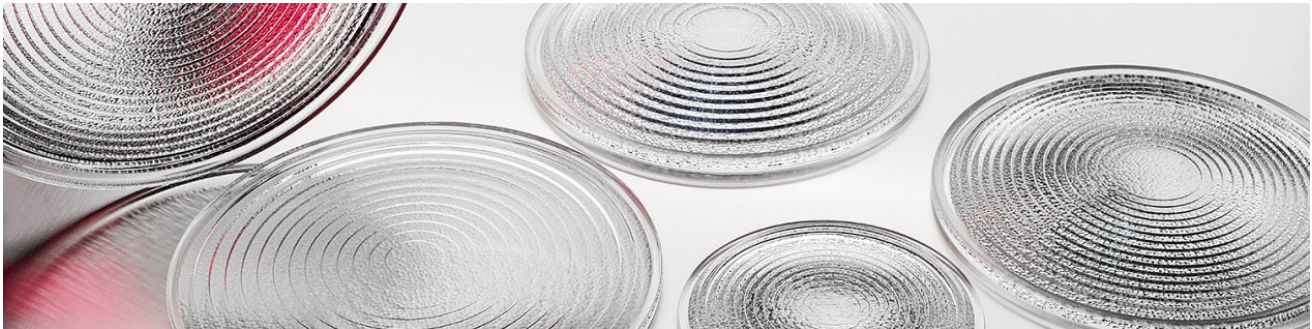


FRESNEL LENSES TECHNICAL DATA AND PART NUMBERS



Standard Fresnel lenses

Diameter in mm	Focal length mm		Half beam angle Flood	Part No.	
	Spot	Flood min		annealed ¹	tempered ²
50	50	26	40°	8.40.011 (SAP 1065737)	-
80	50	26	40°	8.40.004 (SAP 1071934)	8.40.104 (SAP 1071944)
112	110	55	40°	8.40.008 (SAP 1065735)	8.40.108 (SAP 1071946)
130	110	62	40°	8.40.007 (SAP 1071936)	8.40.107 (SAP 1071945)
150	110	60	40°	8.40.010 (SAP 1065736)	8.40.110 (SAP 1071947)
150	100	36	60°	8.40.015 (SAP 1069755)	8.40.115 (SAP 1071949)
152	100	55	40°	8.40.012 (SAP 1071937)	8.40.112 (SAP 1071948)
175	120	65	40°	8.40.022 (SAP 1287728)	8.40.122 (SAP 1287730)
200	140	75	40°	8.40.031 (SAP 1287731)	8.40.131 (SAP 1287732)
250	150	80	40°	8.40.041 (SAP 1065740)	8.40.141 (SAP 1071952)
250 ³	150	80	40°	8.40.042 (SAP 1071943)	8.40.142 (SAP 1071953)
350	210	120	40°	8.40.062 (SAP 1065741)	8.40.162 (SAP 1071954)
500	290	160	40°	-	8.40.171 (SAP 1071956)

¹ Maximum temperature in the center of the annealed Fresnel lens 450°C

² Maximum temperature in the center of the tempered Fresnel lens 330°C

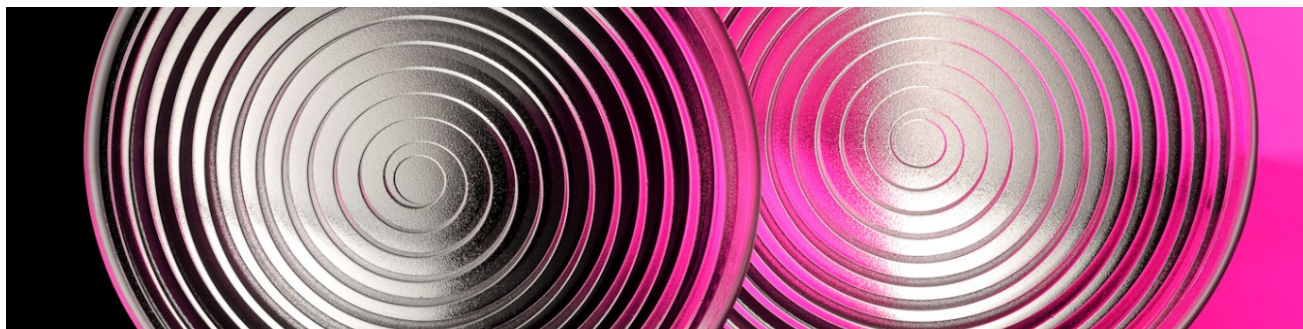
We recommend using annealed Fresnel lenses at temperatures > 330°C

³ Preferred type for HMI application



PR VSM 002_07E 0921

FRESNEL LENSES TECHNICAL DATA AND PART NUMBERS



Short focal length Fresnel lenses

Diameter in mm	Focal length mm		Half beam angle Flood	Part No.	
	Spot	Flood min		annealed ¹	tempered ²
80	40	14	60°	8.40.204 (SAP 1071958)	-
112	55	20	60°	8.40.208 (SAP 1065744)	-
120	80	32	60°	8.40.205 (SAP 1065742)	8.40.405 (SAP 1071963)
130	70	27	60°	8.40.207 (SAP 1065743)	8.40.407 (SAP 1071964)
150	80	30	60°	8.40.210 (SAP 1065745)	8.40.410 (SAP 1071965)
152	85	50	40°	8.40.017 (SAP 1065738)	-
175	85	32	60°	8.40.220 (SAP 1297194)	8.40.420 (SAP 1297247)
200	100	40	60°	8.40.231 (SAP 1071960)	8.40.431 (SAP 1071968)
250	120	45	60°	8.40.243 (SAP 1297250)	8.40.443 (SAP 1297252)
300	150	60	60°	8.40.251 (SAP 1071961)	8.40.451 (SAP 1071970)
350	180	75	60°	8.40.262 (SAP 1065748)	8.40.462 (SAP 1071971)
450	235	100	60°	8.40.267 (SAP 1071962)	8.40.467 (SAP 1071973)
625	270	120	60°	-	8.40.482 (SAP 1065749)

¹ Maximum temperature in the center of the annealed Fresnel lens 450°C

² Maximum temperature in the center of the tempered Fresnel lens 330°C

We recommend using annealed Fresnel lenses at temperatures > 330°C

Spiral and other facet designs

Diameter in mm	Focal length mm Spot	Part No.	
		annealed	
150*) **)	80	8.40.942	(SAP 1503252)
175*)	85	8.71.600	(SAP 1401097)
200***)	235	8.40.034	(SAP 1137518)
200**) ***)	140	8.40.031-K	(SAP 1502494)
200**)	80	8.40.233	(SAP 1503971)
252	120	8.40.065	(SAP 1503003)

*) Patented spiral design

**) New facet design

***) On request