

The concept



- Reflector lens in one single piece
- Long-lasting glass optics
- Aesthetic design
- Highly reflective and durable coating (98 %)
- UV stable
- Scratch-resistant
- Operating temperature up to 400 °C
- SNAP IT options*

Auer Lighting GmbH
Hildesheimer Straße 35
37581 Bad Gandersheim
Germany
T +49 (0) 5382 701-0
F +49 (0) 5382 701-297
info@auer-lighting.com
www.auer-lighting.com

* CAD-files are available at shop.auer-lighting.com

LED REFLECTOR LENS JUPITER

NON-GLARE HYBRID OPTICS

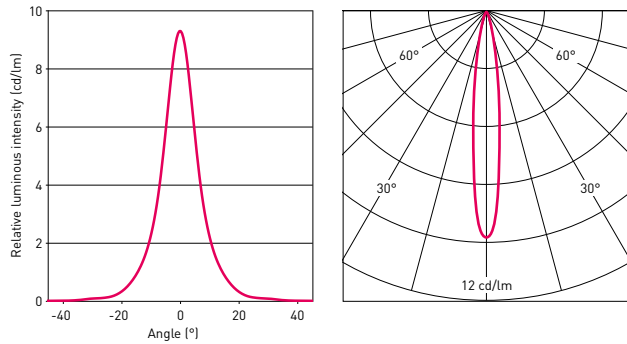


PR ALV-3 025_01E 0316_0.25 look/look Printed in Germany

Non-glare hybrid optics with defined beam angles

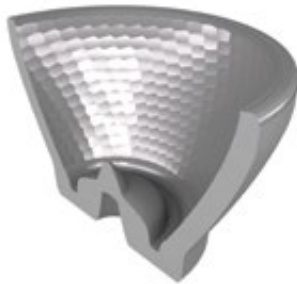
The Jupiter 50 Family

Jupiter 50	Narrow	Medium	Wide
Outer diameter [mm]	50		
LES of LED [mm]	6		
Beam angle [°]	13	20	35
Field angle [°]	30	40	60
Efficiency [%]	85		



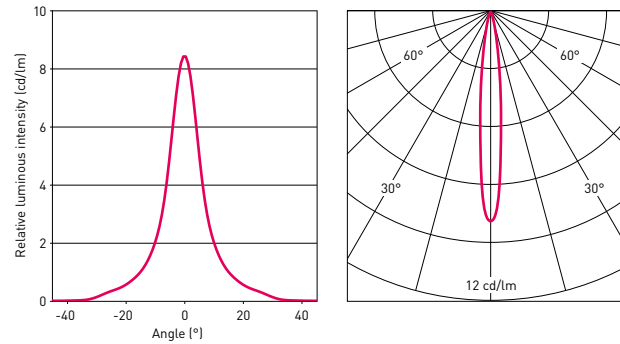
Available for

- Bridgelux: V6
- Citizen: CLU027
- Cree: CXA 1310, XHP 50
- Nichia: NJCxS024Z
- Osram: Soleriq P6, Oslon Square
- Philips: Luxeon CoB 1202s, Luxeon M
- Others on request



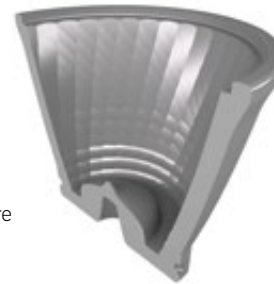
The Jupiter 70 Family

Jupiter 70	Narrow	Medium	Wide
Outer diameter [mm]	70		
LES of LED [mm]	9		
Beam angle [°]	10	20	35
Field angle [°]	30	40	60
Efficiency [%]	85		



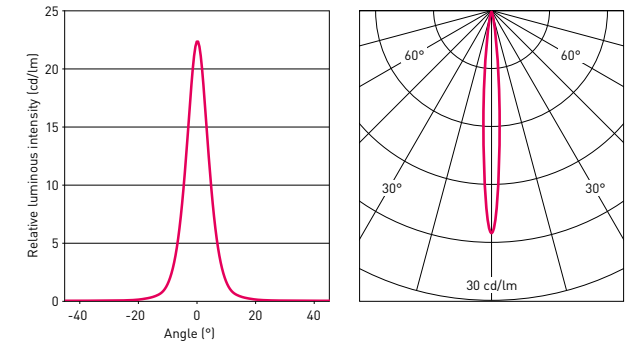
Available for

- Bridgelux: VERO10
- Citizen: CLL022
- Cree: CXB1512, XHP70
- Nichia: NFCWL036B, NVSW119C
- Osram: Soleriq P9, Oslon Square
- Philips: Luxeon 1203, Luxeon M
- Samsung: LC008B, LH351
- Others on request



The Jupiter 110

Jupiter 110	Narrow
Outer diameter [mm]	110
LES of LED [mm]	9
Beam angle [°]	7.5
Field angle [°]	18
Efficiency [%]	85



Available for

- Cree: CXA 1310, CXA1512
- Nichia: NSBWL066A, NSBWL 121A
- Osram: Soleriq P9, Soleriq S13
- Philips: Luxeon CoB 1203, Luxeon CoB 1205
- Seoul: ZC12
- Others on request

